



Project Summary

Residential Orphanage

How to sustainably feed, shelter and nurture thousands of orphans over the next hundred years...

A long-term, sustainable model to provide for children in need of care and protection:

There are two problems with ordinary orphanages. First, they are institutional, which means that the orphans never feel like they are part of a family. Second, they are unsustainable, wholly dependent on outside financial support that most often comes in the form of fluctuating foreign donations. We have developed a model to solve both of these problems by creating a residential community situated on an integrated, sustainable farm.

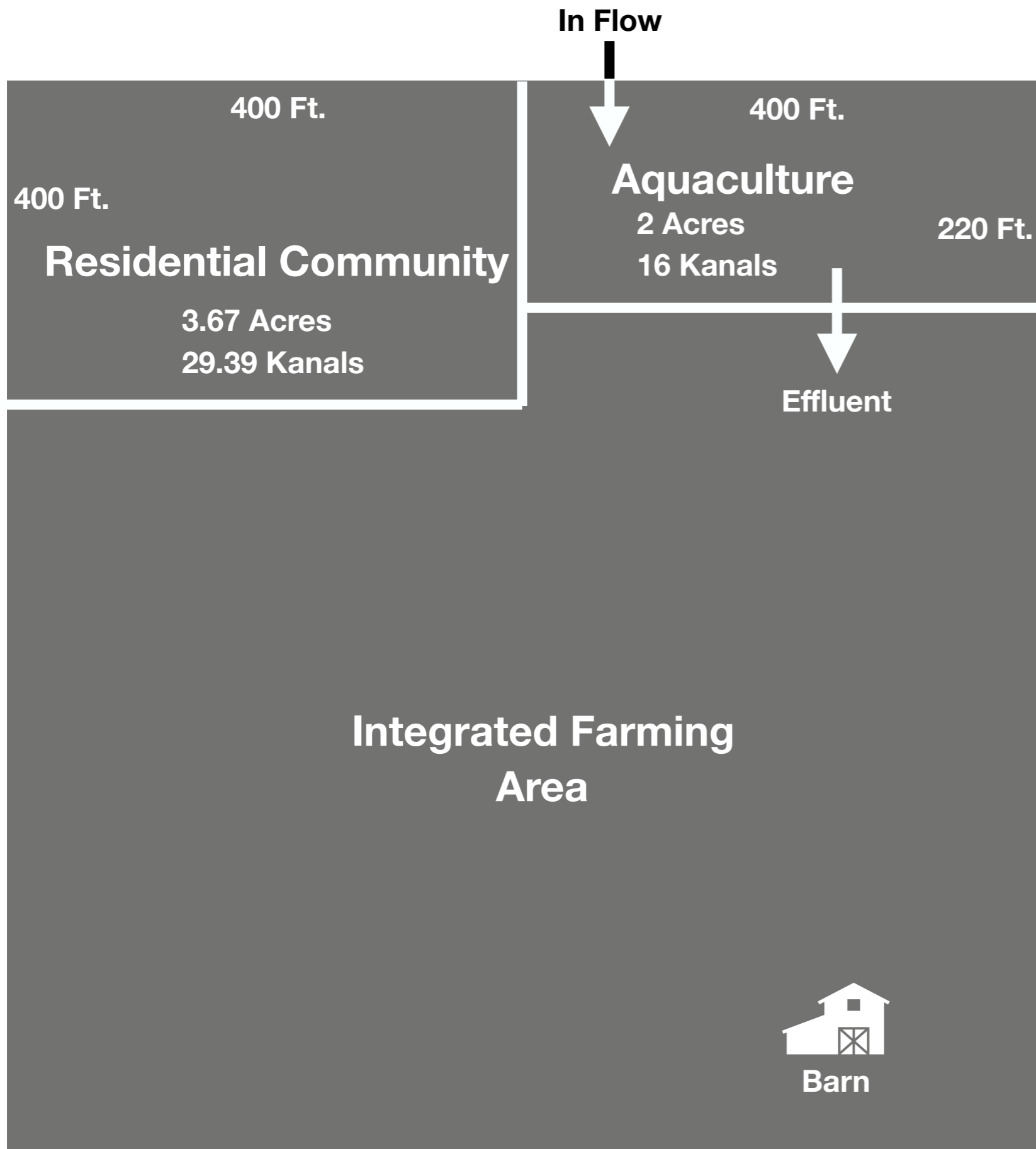
We place each orphan in a home with a mother and father figure, and an older brother and older sister figure. These staff members are dedicated to making that orphan feel like a part of their family, not only for the time the orphans lives in the community, but for their entire life. The orphan lives in a room with no more than three other peers, who are treated like siblings in a residential home. Each 3,000 square foot home will contain enough rooms to house between twelve (12) and sixteen (16) orphans.

We situate these homes in a community consisting of twelve (12) homes in total. The families in the other homes function as an extended family to each orphan, and the entire community is interconnected by a shared school, cafeteria, clinic and recreation center.

This community is placed on an integrated farm that is capable of providing both staple foods and a sustainable income to the orphanage. This income is used to pay for the clothes, food, shelter and education of the orphans through college. Orphans who opt out of attending college have the option to receive hands-on training in aquaculture, agriculture and animal husbandry.

The integrated farm is designed to provide a staple source of protein through trout farming. The effluent from the trout farm is used to fertilize the growth of fruit, vegetables and nuts on the property. In addition, live stock are kept on the property as a source of additional staple foods.

The goal of this community and farm is to build sustainability that will continue to take care of orphans throughout the generations to come.



The orphanage will be divided into two major sections.

First: the **Residential Community**, consisting of twelve homes, a school, a cafeteria and a gymnasium.

Second: the **Integrated Farm**, consisting of integrated aquaculture, agriculture and animal husbandry.

Residential Community:

Designed to house up to two-hundred (200) orphans in family homes with a father and mother figure, an elder brother and older sister figure, and an extended family and community.

On 90,000 square feet of land, or about 24 Kanals (3 acres), we will build:

12 Homes, each with:

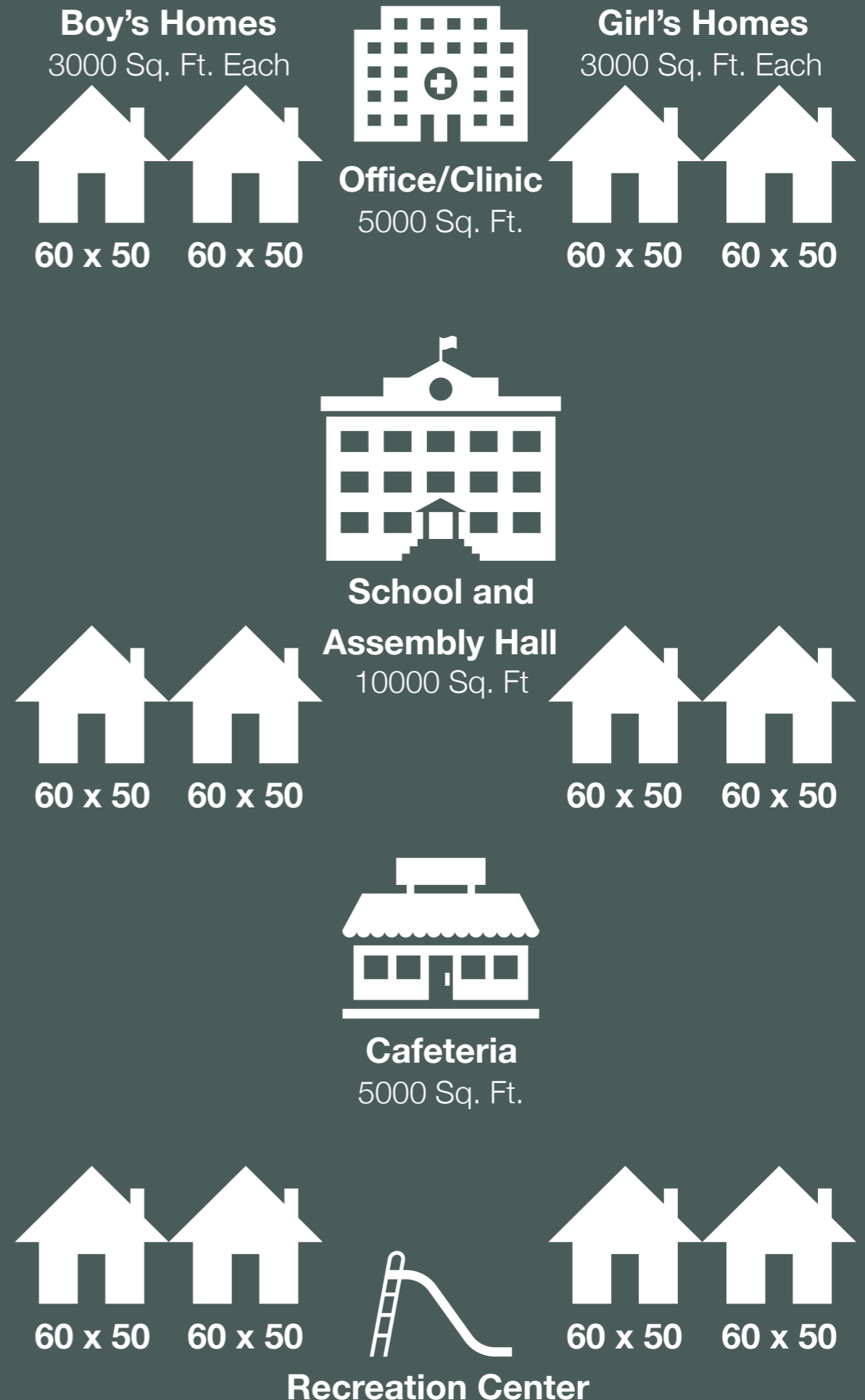
- 3,000 square feet of living space,
- Five-to-six (5-6) bedrooms,
- A small kitchenette, and
- A living room.

An **Office Building**, with a **Clinic**,

A **School**, with classrooms and an assembly hall,

A **Cafeteria**, capable of feeding the entire community, and

A **Recreation Center**, with a gymnasium.



THE SCHOOL:

With degree and certificate holding teachers dedicated to educating and preparing students to be contributing members of society throughout their lives, providing training in history, languages, arts, mathematics and the sciences, as well as mental, emotional and spiritual guidance, from preschool through the twelfth grade.

All students will be given life, academic, and career counseling, and opportunities to pursue their unique interests and develop their own gifts and talents in a structured and disciplined environment.

THE CAFETERIA:

Offering three healthy meals per day, with foods sourced from the integrated farm and local area, to provide a consistent, wholesome

mealtime discipline for each family in the community.

At the cafeteria, children will have opportunities to interact with others in the community, providing a stable and protected social environment.

THE CLINIC:

With registered nurses and trained physicians on staff, the clinic will conform to the highest standards of professional care. Staff and administrators will work together to ensure that each child remains strong, safe, and healthy and shows proper development through every stage of life.

THE RECREATION CENTER:

A place for children to play and develop athletically, with an emphasis on structured activities, group sports, team building, growth

and discipline. Facilities will include both playground equipment, a sports field and gymnasium.

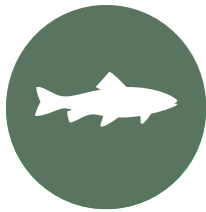
THE HOMES:

Each child will be placed in a room with no more than three peers. In this room they will be given a bed, a desk and a closet to keep their personal belongings. The peers situated in their rooms will be treated as their close siblings.

Each home will exclusively house same gendered children. They will have access to washroom facilities and shared living spaces, like a kitchenette and living room. At home, the children will be supervised by a mom and dad, and an older brother or sister figure. These staff members will have their own rooms, and work to maintain a familial atmosphere of love, order and discipline within the home.

Four Developmental Phases:

To create a sustainable residential community for the lifetime mental, physical and spiritual care of orphans



Phase 1: Establish a sustainable source of staple foods, while constructing two homes.



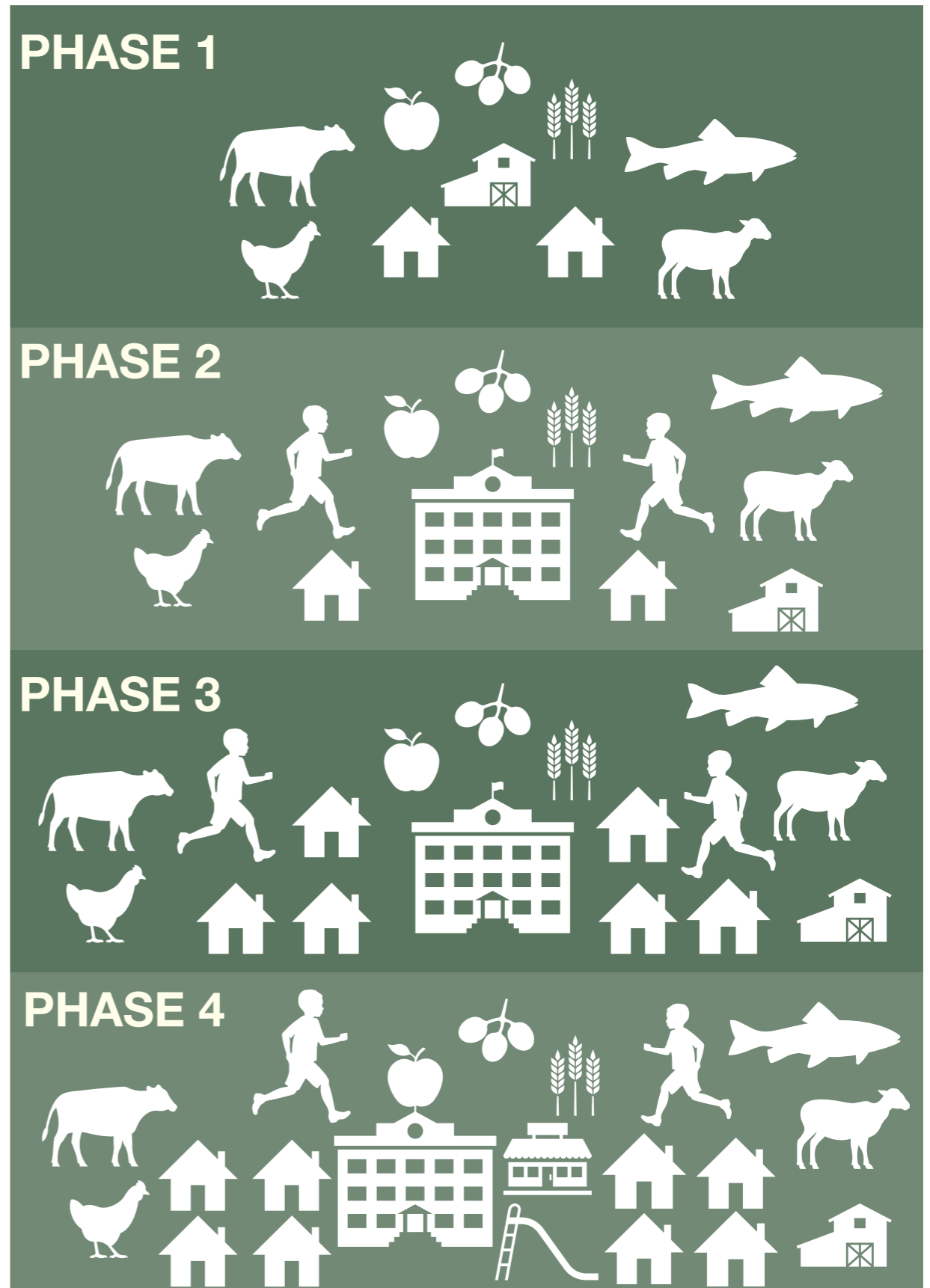
Phase 2: Construct a school and introduce twenty-four orphans to the community.



Phase 3: Expand the community by constructing four additional homes and integrating forty-eight more orphans.



Phase 4: Construct two additional homes, a recreation center and a cafeteria, while adding twenty-four more orphans.





Orphan Introduction and Integration:

Working with the Departments of Social Welfare and Child Protection, we will seek to introduce children in need of care and protection to the community with a tiered priority structure:

First Priority: Double-orphans between the ages of zero (0) and four (4) years old;

Second Priority: Double-orphans between the ages of five (5) and ten (10) years old;

Third Priority: Double-orphans between the ages of eleven (11) and thirteen (13) years old;

Fourth Priority: Single-orphans between the ages of zero (0) and thirteen (13) years old;

note: the approximate total number of orphans in Kashmir; the approximate number of double orphans

Timeline for our First Orphanage in Kashmir

